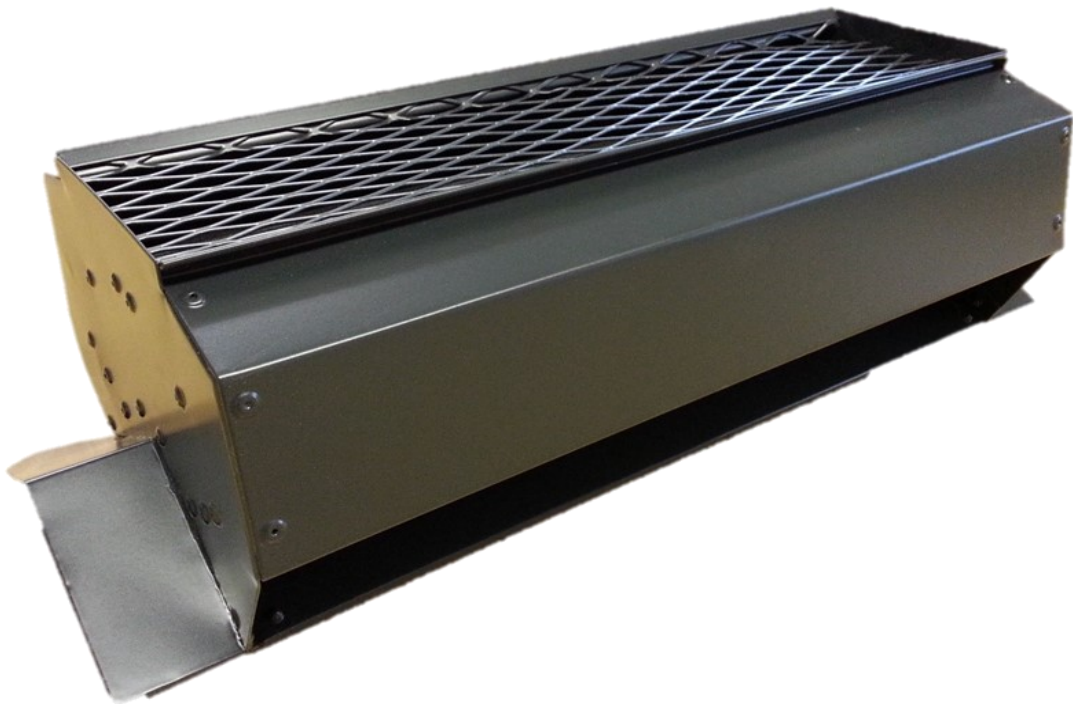




# McKenzie Martin Ltd

LOUVRE AND NATURAL VENTILATION SPECIALISTS



# Mackridge & Kenstack

Roof Mounted Ventilators

McKenzie Martin—Louvres and Natural Ventilation

Eton Hill Works, Eton Hill Road, Radcliffe, Manchester. M26 2US

Www.McKenzieMartin.co.uk Sales@McKenzieMartin.co.uk Tel: 0161 723 2234



## General Information

### Functional Options

- Permanently Venting
- Controllable ventilation by means of an operable internal damper
- In the event of a fire the damper can be fitted with a fusible link and spring loaded to open or close as required

### Optional Additions

- Extension plates to ventilator base end flanges
- Internal closure flashing to close off the cavity where a roof has an overpurlin liner
- Bird guards — 1.2mm expanded aluminium alloy. Diamond mesh size; 12.35mm x 35.05mm
- Security guards—5.8mm square stainless steel mesh 1.6mm thick
- Fusible link shields — for use in sprinklered buildings

## Mackridge

**In any natural ventilation scheme involving conventional industrial buildings the optimum position, under normal circumstances, is to provide a system of air extraction through the highest point of a building—the roof apex.**

**The Mackridge is a natural ventilator designed specifically for mounting along the ridgeline of a building. It can be manufactured in a single unit or continuous form to suit any pitch of roof and can be fitted to any type of sheeted or decked roofing material.**

**The relative position of the ventilator along the roof apex maintains the longitudinal symmetry of the building appearance, unlike many other types of natural ventilator.**

**The Mackridge is offered in a variety of materials and colours to match or contrast with the roof cladding in place. Each ventilator is custom made to suit individual requirements with a variety of functional and control options.**



**McKenzie Martin custom build each ventilator unit to suit the particular building structure, dimensions and characteristics.**

**Units can be fabricated to fit uneven apex roofs, such as northlight.**

**If you have any such requirements please consult our sales staff using the information below.**

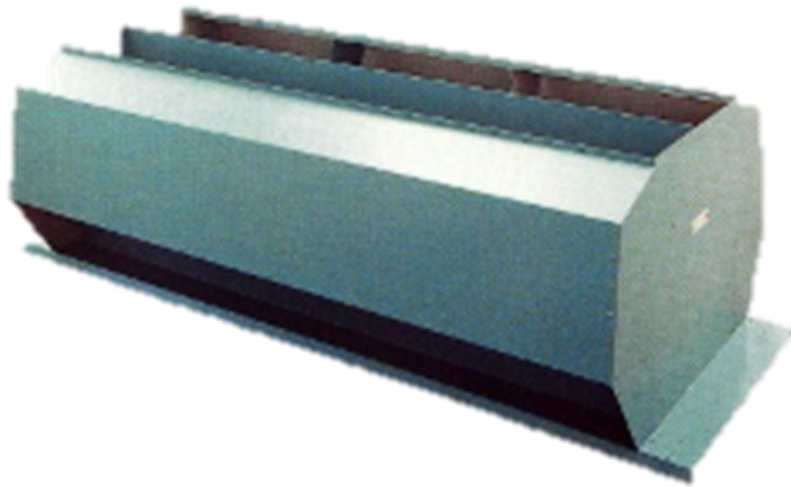


**McKenzie Martin—Louvres and Natural Ventilation**

**Eton Hill Works, Eton Hill Road, Radcliffe, Manchester. M26 2US**

**Tel: 0161 723 2234 Sales@McKenzieMartin.co.uk www.McKenzieMartin.co.uk**

# Kenstack



The Kenstack is a Natural Ventilator suitable for mounting onto any type of roof sheeting and decking or into glazing in either a sloping or flat configuration.

With similar functional performance to the Mackridge ventilator they are particularly suited for installation onto buildings having an unequal pitched roof (e.g. northlight construction) or on projects where height restrictions apply.

Each unit can be custom made to suit existing purlin or glazing centres with the minimum of disturbance since no additional supporting framework is required. The ventilator base flange can be formed to suit any type of profiled roof sheeting. Each ventilator is offered with a variety of functional and control options.

## Manufacturing Materials

- Plastic coated galvanised steel.
- Colourcoat HP200 Plastisol available in a full range of colours
- Mill finish aluminium allow to BS1470 3103 H14 (NS3 H4)
- Galvanised steel in stoved acrylic
- Custom Finishes to suit requirements are available

## Control Options

### Manual

Nylon covered wire cable to:

- Clam cleat/Clutch control—variable setting
- Winch—variable setting
- Friction loaded—variable setting

### Pneumatic

- For day to day ventilation incorporating firemans override if required. Additional options include connection to smoke detection systems, thermostats, time switches etc.

### Fusible Links

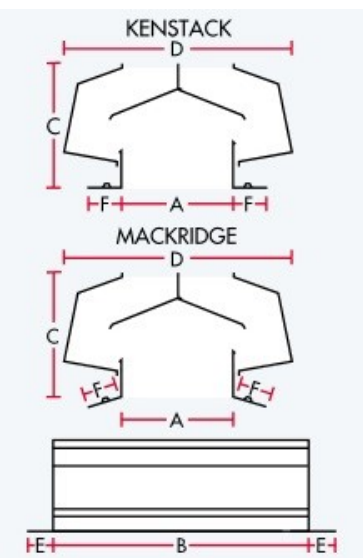
- These can be fitted in conjunction with any of the above control options to provide overriding release. Alternative temperature rated links are available

### Electromagnets

- These retain the damper in the closed position until de-energised by remote signal. Units fitted with electromagnets require manual re-setting

### 24V Electric

- To open and close internal damper



## MACKRIDGE / KENSTACK

Dimensions				Flanges Side/End E&F	Approx. Weights	
Throat Width A	Lengths B	Overall Height C	Overall Width D		Aluminium	Plastisol
152mm		178mm	305mm	TO SUIT MOUNTING DETAIL	18Kgs	28Kgs
203mm		279mm	406mm		22Kgs	35Kgs
254mm		330mm	508mm		25Kgs	41Kgs
305mm	From	381mm	610mm		30Kgs	48Kgs
381mm	1.220m	457mm	762mm		35Kgs	56Kgs
457mm	to	533mm	914mm		42Kgs	68Kgs
508mm	3.00m	610mm	1.016mm		50Kgs	80Kgs
610mm		686mm	1.219mm		55Kgs	88Kgs
762mm		889mm	1.524mm		65Kgs	104Kgs
914mm		1.143mm	1.829mm		70Kgs	N.A.

Whilst the above sized units cater for most standard requirements - non standard units can be tailor-made to suit special requirements.

McKenzie Martin—Louvres and Natural Ventilation

Eton Hill Works, Eton Hill Road, Radcliffe, Manchester. M26 2US

Www.McKenzieMartin.co.uk Sales@McKenzieMartin.co.uk Tel: 0161 723 2234



# Available Products

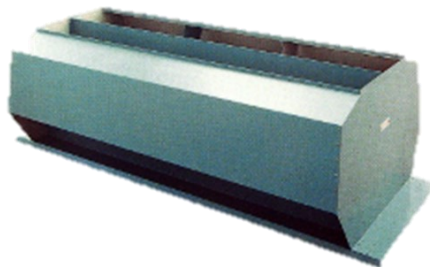
**We offer a wide range of ventilation products to cover a variety of applications**

## Architectural Louvres

- Maximair
- Maximair Double Bank
- K Series Louvres
- A Series Louvres

## Fabricated Louvres

- Continuous Fixed Louvre
- Fixed Box Louvre
- Combination Louvre
- Sand Trap
- SR Louvre
- Chevron
- Louvred Doors
- Turrets
- Acoustic Louvres
- Dummy Louvres



## Natural Ventilation

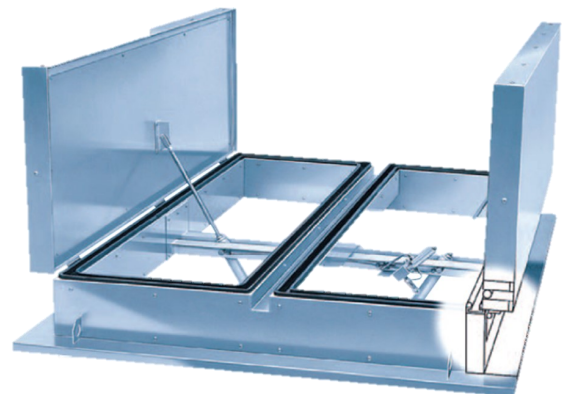
- Mackridge
- Kenstack
- Clearvent
- Multivent
- Macvent
- Dummy Louvres

## Smoke Ventilators

- Clearfire 2000
- Clearfire 2000 LV
- Firemac 2000
- Vestra 2000
- Vertica 2000
- Clearlite 2000

## Operating Louvres

- Operating Box Louvres
- Thermac Operating Louvres



**McKenzie Martin—Louvres and Natural Ventilation**

**Eton Hill Works, Eton Hill Road, Radcliffe, Manchester. M26 2US**

**Tel: 0161 723 2234 Sales@McKenzieMartin.co.uk www.McKenzieMartin.co.uk**