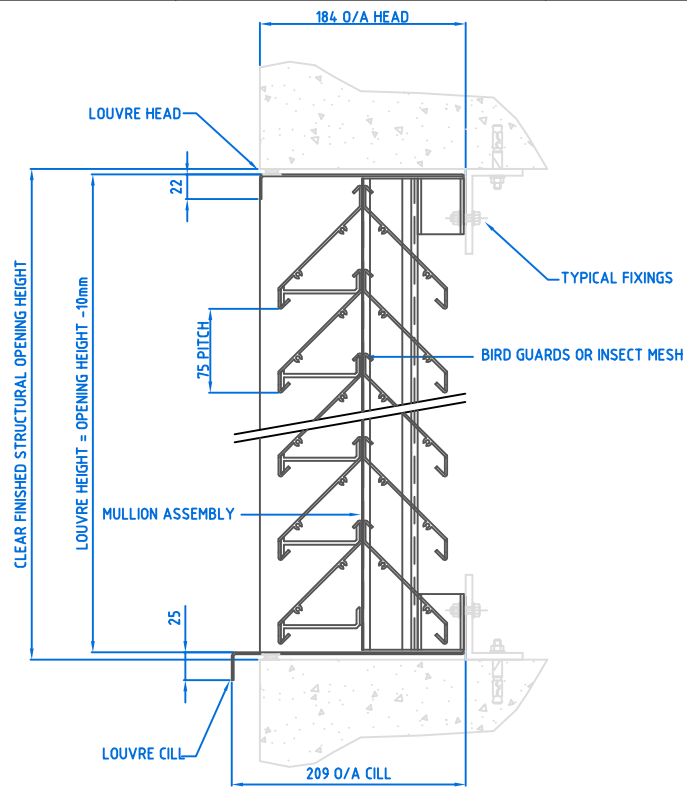
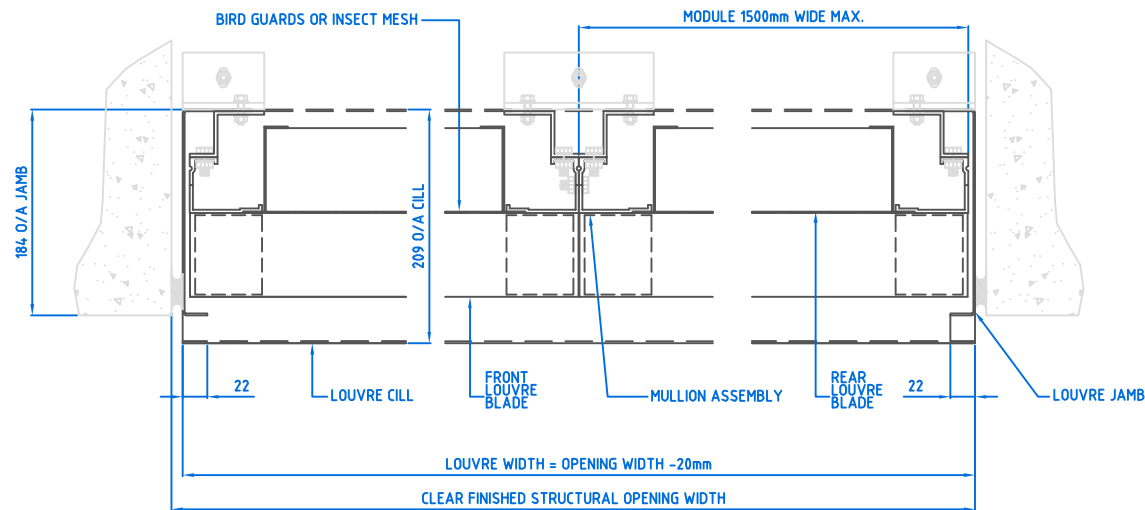


1 2 3 4 5 6 7 8

A



VERTICAL SECTION  
THRU Maximair Double Bank 75  
LOUVRE



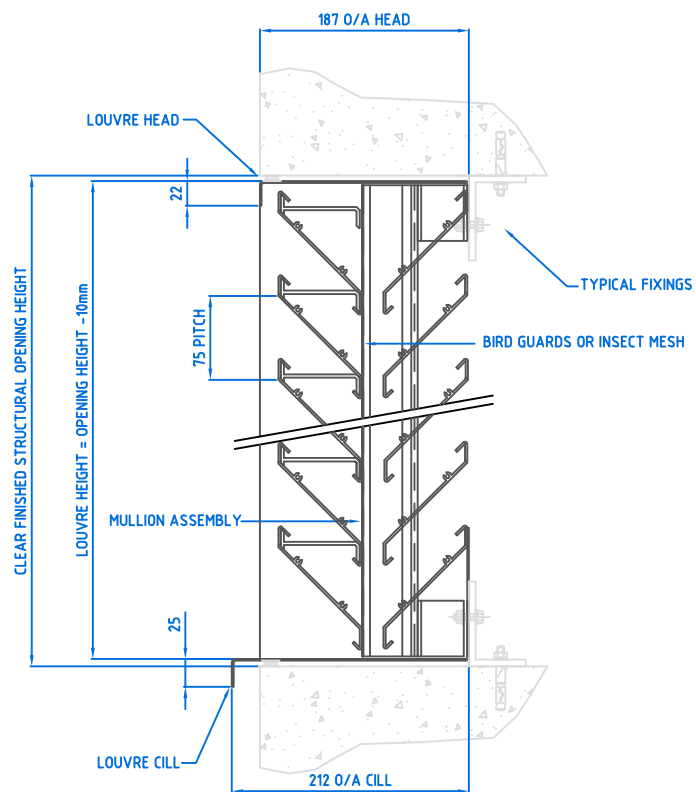
PLAN SECTION  
THRU Maximair Double Bank 75  
LOUVRE

B

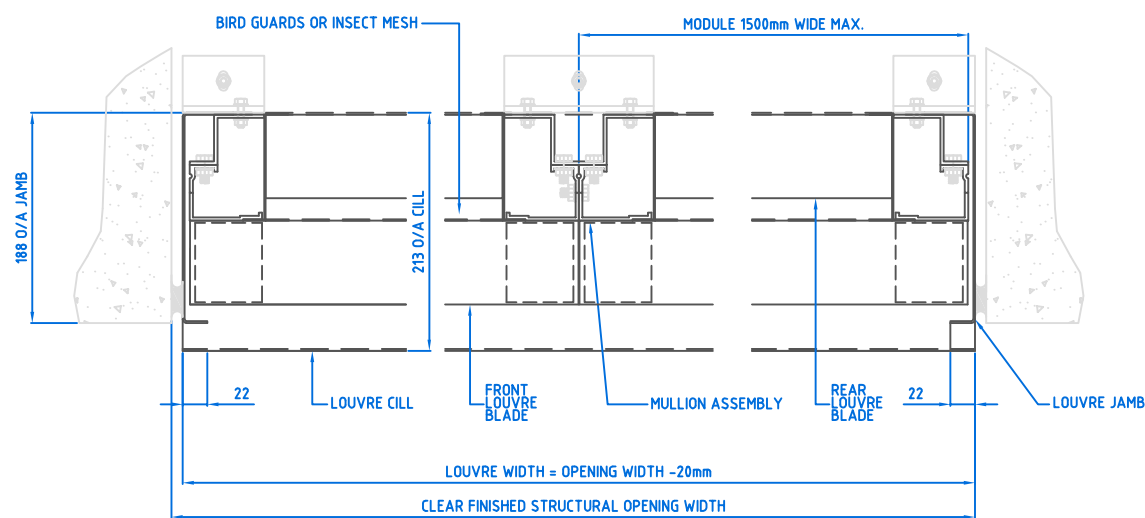
C

D

E



VERTICAL SECTION  
THRU Maximair "Inverted" Double Bank 75  
LOUVRE



PLAN SECTION  
THRU Maximair "Inverted" Double Bank 75  
LOUVRE

LOUVRE SCHEDULE (TYPICAL)

McKENZIE-MARTIN MAXIMAIR 75 heavy duty extruded aluminium, double bank louvre system. Louvre blades are mounted at a pitch of 75mm by means of aluminium clips onto extruded aluminium concealed vertical supporting mullions to form a louvre module. Louvre supplied as a series of assembled modules to form continuous louvre banks with an unbroken appearance.

Accessories

System has a wide range of accessories available including bird guards, insect mesh, single skin blanking plates, insulated blanking plates, mitred corners, perimeter flashings, integrated edge details to interface with all types of cladding systems and building constructions.

Louvres supplied as a series of fully assembled modules to form continuous louvre banks with an unbroken appearance.

Single and double leaf louvred door sets either with stainless steel hinges, or with stainless steel pivots, stainless steel handles, stainless steel stops, stainless steel restrictors and euro-profile locks.

Materials and Finishes.

Mill finish extruded 6063 T6 aluminium alloy.

-or-

Extruded 6063 T6 aluminium alloy with a polyester powder paint finish (including Syntha Pulvin) in a wide choice of colours and gloss levels

-or-

Extruded 6063 T6 aluminium alloy with anodising in natural Silver or coloured Anolok II.

Options

Bird guards - 1.2mm expanded aluminium alloy, diamond mesh size 12.35mm x 35.05mm.

-or-

Insect mesh - perforated expanded aluminium alloy, diamond mesh size 3.5mm x 2mm.

-&/or-

Security guards - 1.6mm stainless steel, square mesh sizes 5.8mm x 5.8mm.



**McKenzie-Martin Ltd**  
Ventilators - Louvres - Rooflights

Elton Hill Works, Elton Hill Rd, Radcliffe, Manchester, M26 2US  
Telephone 0161-723 2234 Fax No. 0161-725 9531  
www.mckenziemartin.co.uk general@mckenziemartin.co.uk

Title:

MAXIMAIR DOUBLE 75

Project:

Drawn By:

CJF

Date:

08-01-14

Checked By:

-

Approved Date:

-

Scale:

NTS

Job No.

-

Org. No.

MM-MAXIDDOUBLE75

A

Iss.

Amendment

08-01-14

Date

CJF

Sig.

1 2 3 4 5 6 7 8

A

B

C

D

E

F