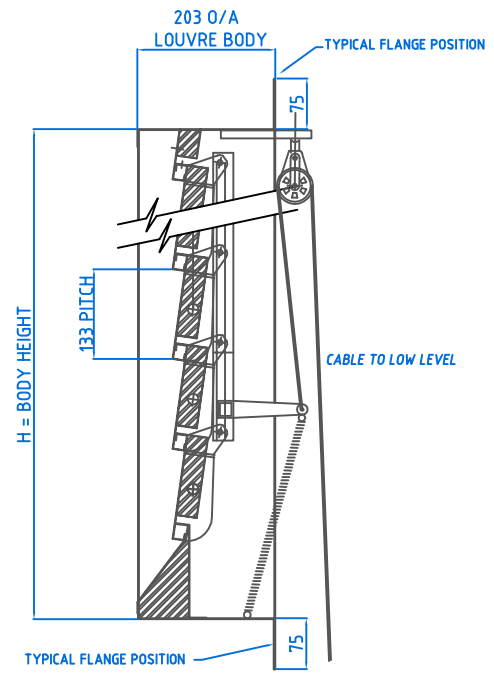


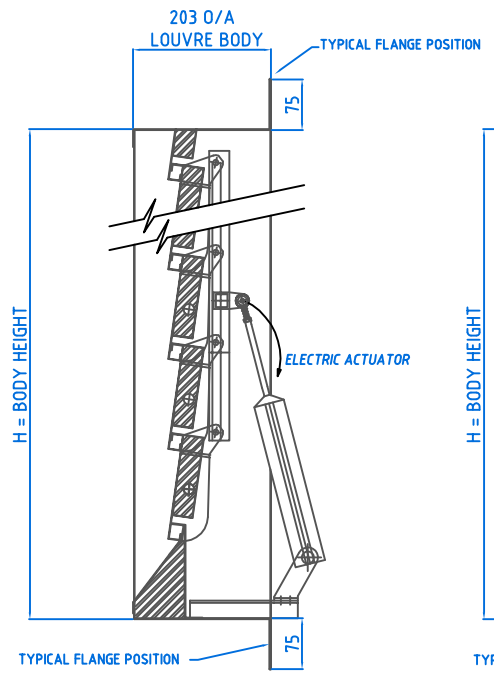
1 2 3 4 5 6 7 8

A



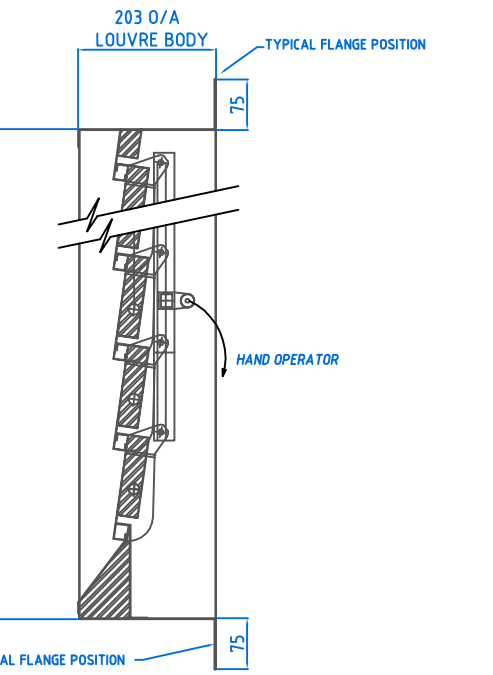
FRONT REAR

VERTICAL SECTION THRU THERMAC OPERATING LOUVRE WITH CABLE CONTROL



FRONT REAR

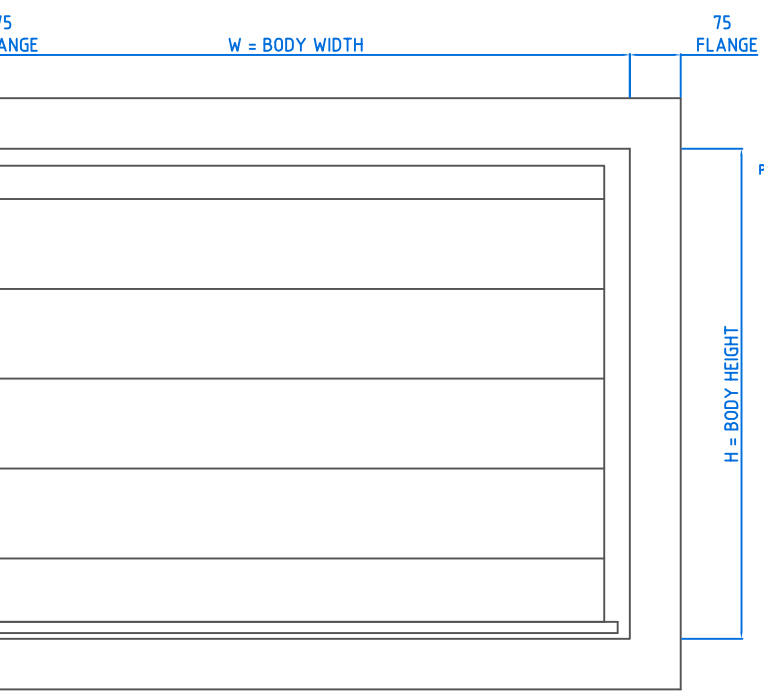
VERTICAL SECTION THRU THERMAC OPERATING LOUVRE WITH ELECTRIC ACTUATION



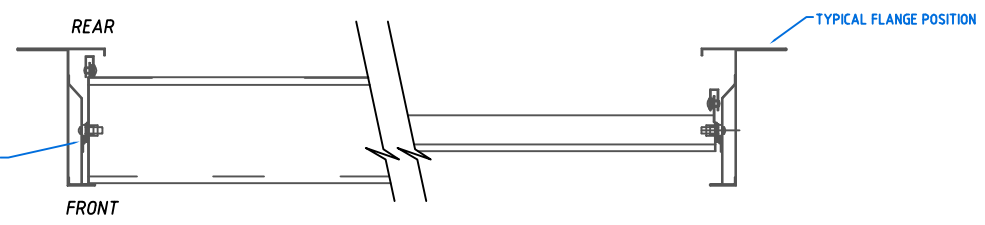
FRONT REAR

VERTICAL SECTION THRU THERMAC OPERATING LOUVRE WITH HAND FRICTION CONTROL

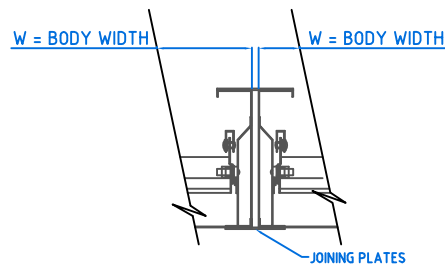
B



FRONT VIEW THERMAC OPERATING LOUVRE



HORIZONTAL SECTION THRU THERMAC OPERATING LOUVRE SHOWING BLADE IN OPEN & CLOSED POSITION



HORIZONTAL JOINT DETAIL BETWEEN LOUVRE MODULES

LOUVRE SCHEDULE (TYPICAL)

McKENZIE-MARTIN THERMAC OPERATING LOUVRE. Energy saving operating louvre containing adjustable pivoting insulated louvre blades. Individual units contain linked movable blades which are mounted into robust box frames. Louvre blades are double skin containing 30mm polyurethane insulation having a U value of 0.6W/m²°C. Unit is fitted with water repellent silicone treated polypropylene pile draughtstrips. Units supplied in a pre-assembled form for use as single units, or to be joined together to form louvre banks.

Accessories
System has a wide range of accessories available including bird guards, insect mesh, fixing flanges, integrated edge details to interface with all types of cladding systems and building constructions.

Materials and Finishes.
Mill finish 1.2mm aluminium alloy to BS EN 485.
-or-
Plastisol coated 0.7mm steel in a full range of colours.
-or-
PVDf coated 0.7mm steel in a full range of colours.
-or-
Aluminium alloy 1.2mm to BS EN 485 with a polyester powder paint finish (including Syntha Pulvin) in a wide choice of colours and gloss levels.
-or-
Galvanised 0.9mm steel with a polyester powder paint finish in a wide choice of colours and gloss levels.

-or-
Pre-coated units manufactured using a wide range of coated aluminium and steel substrates including HPS200 & Prisma, in a full range of colours.
-or-
Available using a wide variety of sheet materials including stainless steel, zinc, aluzinc, bronze & copper.

Options
Bird guards - 1.2mm expanded aluminium alloy, diamond mesh size 12.35mm x 35.05mm.
-or-
Insect mesh - perforated expanded aluminium alloy, diamond mesh size 3.5mm x 2mm.
-&/or-
Security guards - 1.6mm stainless steel, square mesh sizes 5.8mm x 5.8mm.

Controls
Manual: Hand operated, friction loaded & adjustable to any angle between fully open and fully closed.

-or-
Manual: Pole operated, adjustable to any angle between fully open and fully closed.
-or-
Extended Manual: Nylon covered wire cable to clam cleat, adjustable to any angle between fully open and fully closed.
-or-
Extended Manual: Nylon covered wire cable to winch operator, adjustable to any angle between fully open and fully closed.
-or-
Pneumatic (Fully open/fully closed) single acting with spring return or double acting.
-or-
Electro-magnetic (Fully open/fully closed) with manual reset.
-or-
Electric actuation (Fully open/fully closed) in 24V dc or 230V ac.

A

B

C

D

E

F

F



McKenzie-Martin Ltd
Ventilators - Louvres - Rooflights
Elton Hill Works, Elton Hill Rd, Radcliffe, Manchester, M26 2US
Telephone 0161-723 2234 Fax No. 0161-725 9531
www.mckenziemartin.co.uk general@mckenziemartin.co.uk

Title: THERMAC LOUVRE		Project:					
Drawn By: CJF	Date: 08-01-14	Checked By: -	Approved Date: -	Scale: NTS	Job No: -	Drg. No: MM-THERMAC	
				A		08-01-14	CJF
				Iss.	Amendment	Date	Sig.

1 2 3 4 5 6 7 8