

A

LOUVER SCHEDULE (TYPICAL)

MCKENZIE-MARTIN 3 BLADE DUMMY LOUVER PROFILES.

Designed to provide the visual appearance of conventional louvers.

Offered in various profiles, including 3 blades profiles high giving 225mm cover height per section – as shown.

Profile length dependant upon material specified.

Supplied in sections having multiple louvre profiles & suitable for joining together to give a continuous unbroken appearance.

Accessories

System has a wide range of accessories available including butt straps, mitred corners, perimeter flashings, integrated edge details to interface with all types of cladding systems and building constructions.

Single and double leaf louvered door sets with stainless steel hinges, handles, stops, restrictors and euro-profile locks.

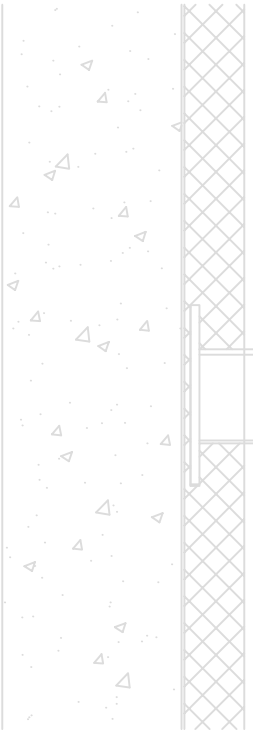
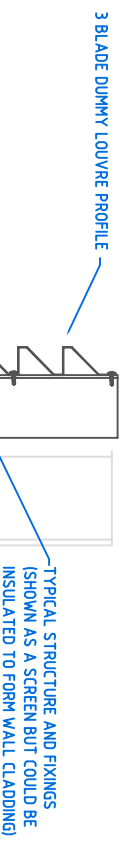
Materials and Finishes:

- Plastisol coated 0.7mm steel in a full range of colours.
- or- PVDf coated 0.7mm steel in a full range of colours.
- or- PVDf coated 0.9mm aluminium in a full range of colours.
- or- Aluminium alloy sheet to BS EN 485 with a polyester powder paint finish (including Syntha Pulvin) in a wide choice of colours and gloss levels.
- or- Galvanised 0.9mm steel with a polyester powder paint finish in a wide choice of colours and gloss levels.
- or- Pre-coated units manufactured using a wide range of coated aluminium and steel substrates including HPS200 & Prisma, in a full range of colours.
- or- Available using a wide variety of sheet materials including stainless steel, zinc, aluzinc, bronze & copper.

Options

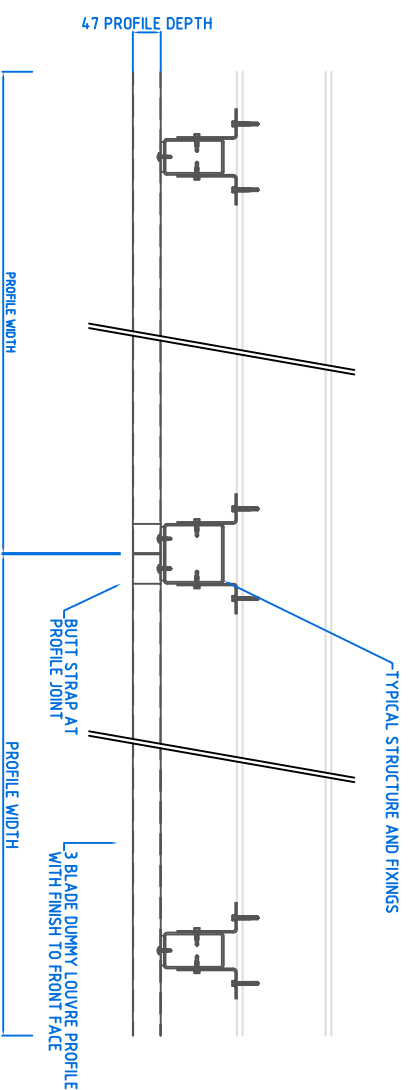
- Produced in various profiles.
- Can include soffit slots or perforations to provide natural ventilation.
- Butt straps.
- Mitred Corners.
- Louvered Doors.
- Flashings and trims.

A



VERTICAL SECTION
THRU 3 BLADE DUMMY
LOUVER PROFILE (0.9mm gauge)
(SHOWN AS A SCREEN BUT COULD BE
INSULATED TO FORM WALL CLADDING)

A



PLAN SECTION
THRU 3 BLADE DUMMY
LOUVER PROFILE (0.9mm gauge)
(SHOWN AS A SCREEN BUT COULD BE
INSULATED TO FORM WALL CLADDING)

F



McKenzie-Martin Ltd
Ventilators - Louvers - Rooflights
Eton Hill Works, Eton Hill Rd, Radcliffe, Manchester, M3 3JS
Telephone: 0161-723 2234 Fax No: 0161-723 5531
www.mckenzie-martin.co.uk gmc@mcckenzie-martin.co.uk

Title:

3 BLADE 75MM DUMMY LOUVER

Project:

Drawn By:

CJF

Date:

03-03-17

Checked By:

-

Approved Date:

-

Scale:

NTS

Job No.

-

Dwg. No.

MM-3BLADEDUMMY75

F

1

2

3

4

5

6

7

8

F