



McKenzie Martin

Louvres & Ventilation Systems

Louvres

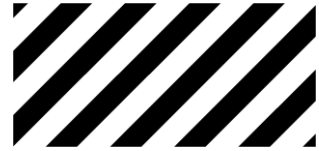
Hereford Sixth Form College

Cladding Louvre Systems
Dummy Profile Louvre



Cladding Louvre Systems

Dummy Louvres



Standard Details

Description

McKenzie Martin manufacture a range of dummy or Lookalike louvres that whilst having the appearance of a conventional louvre, benefit from the simplicity of being a profiled louvred cladding sheet that is cost effective to manufacture and quick to install.

Used in areas where the appearance, but not the functionality, of a conventional live louvre is required.

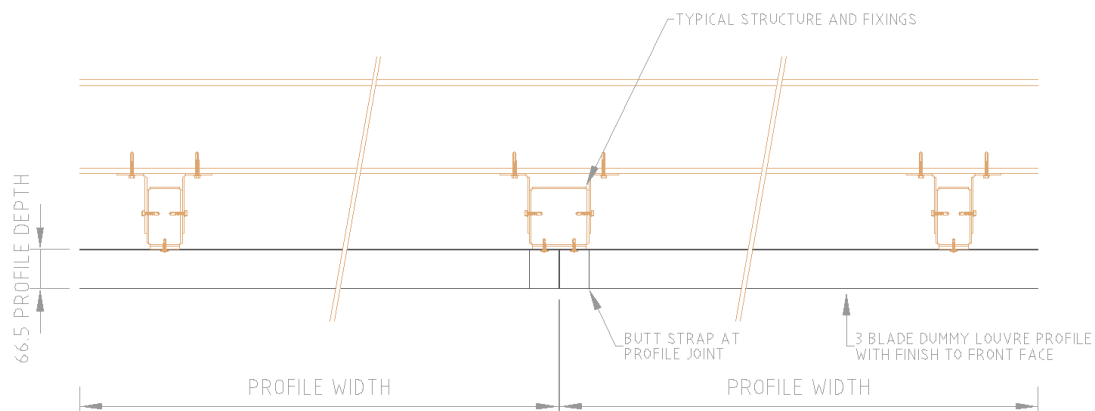
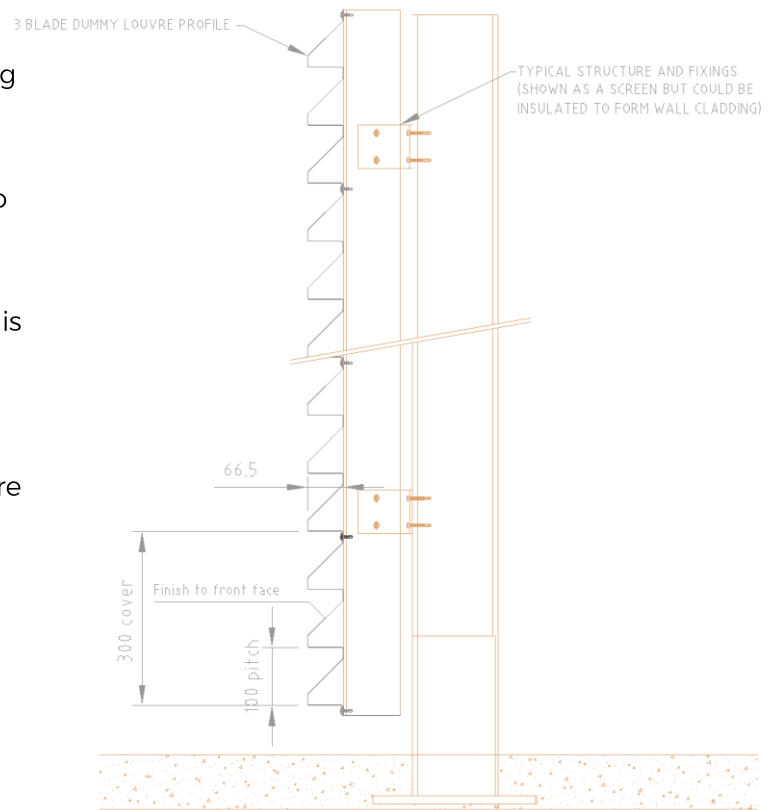
Commonly used in non-ventilated areas of commercial buildings, hospitals and other public buildings with large areas which require only the appearance of conventional louvres.

Design

- Manufactured from 0.9mm aluminium sheet / 0.7mm coated mild steel sheet

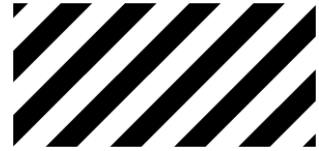
Applications

- Cladding/fascia louvres
- Plant screening
- Decorative purposes



Cladding Louvre Systems

Dummy Louvres

**System Options:**

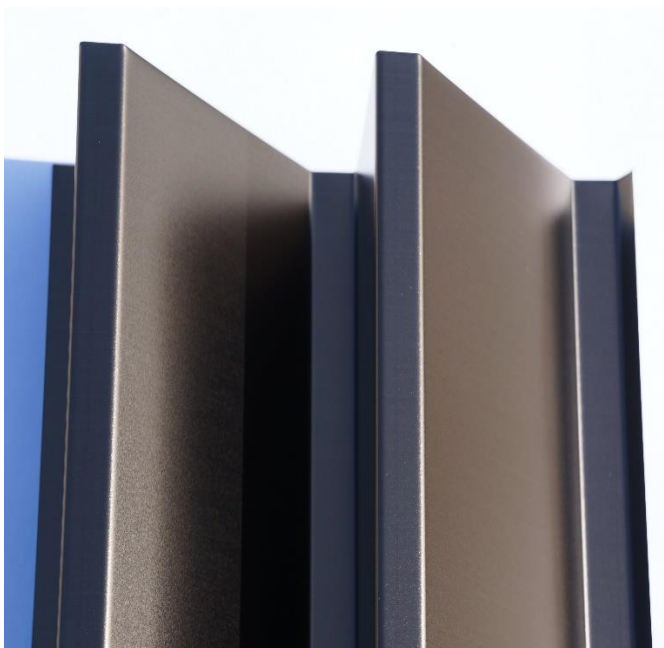
The main body of the Dummy Louvre system is made from sheet Aluminium/mild steel/Plastisol.

Mitred corners and doors can be produced to suit your requirements.

The units can be provided in Mill Finish Aluminium, Polyester Powder Coated or Marine Grade Polyester Powder Coated and fitted with an optional Bird mesh (1.2mm expanded aluminium alloy, diamond mesh size 12.35mm x 35.05mm) or Insect mesh (perforated expanded aluminium alloy, diamond mesh size 3.5mm x 2mm) to active area.

If active areas are required then punched slots can be provided to the soffits which give 48% free area approx.

Single skin 1.5mm aluminium or Double skin insulated or acoustic 1.5mm aluminium

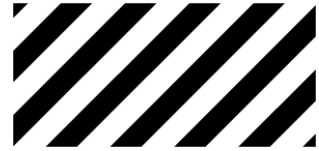
**Size, free area & weight**

Louvre units can be manufactured to bespoke sizes to suit most requirements, larger non-standard sizes are manufactured in multiple sections for site assembly by installer. Standard unit sizes are 2000mm wide x 300mm high coverage.

The system provides a free area of 48% (punched slots only)



Cladding Louvre Systems Dummy Louvres



Specifications



Dummy Louvre Cladding – L10 NBS Spec

Description : Dummy / Cladding Louvre Profiles

Product Reference: 3 – Blade Dummy Louvre (100x300)

Material: 0.9mm Aluminium 1050A H14

Finish: Polyester powder coated to a standard RAL / BS4800 colour to front face, overspray to rear.

Louvre Blade Pitch: 100mm

Louvre Depth: 67mm

Louvre Cover: 300mm

Louvre Free Area: None – Inactive –or- Perforated soffit 40% free area

Louvre weight: Approx. 10 kg's/m² (excluding accessories)

Accessories: 1.2mm galvanised mild steel top hat section mounting mullion, to be installed on structural supports. 50mm wide connecting butt straps.

Design: Suitability for applications wind loads together with structural loading and relevant fixing method to be calculated & assessed by the Project Design Consultant.

All design details/specifications are to be approved by Architect/Agent before manufacture.



McKenzie Martin
Louvres & Ventilation Systems

McKenzie Martin Ltd. Eton Hill Works.

Eton Hill Road, Radcliffe, Manchester. M26 2US

For more information or to speak to one of our sales advisors call 0161 723 2234 or email sales@mckenziemartin.co.uk

www.mckenziemartin.co.uk

